



Spears and Brackets

(2021 Catalogue)

ALUMINIUM SPEARS

C-Female



CODE	FIT	CARTON
SPC19	15.9Ø	200
SPC1	16 Ø	200
SPC15	19 Ø	200
* Size: 95x42		

C-Female



SPC31	15.9Ø	50
SPC9	16Ø	50
* Size: 160x65		

L-Female



SPL15	19Ø	250
* Size: 61x36.5		

Q-Female



SPQ1	16Ø	150
SPQ15	19Ø	150
* Size: 110x30		

W-Female



SPW9	16 Ø	60
SPW33	19 Ø	60
* Size: 160x85		

J-Female



CODE	FIT	CARTON
SPJ19	15.9Ø	125
SPJ1	16Ø	125
SPJ15	19Ø	125
* Size: 100x68		

J-Male



SPJ13	16Ø x1.2 15.9Ø x1.2	125
SPJ7	19Ø x 1.2	125
* Size: 86x68		

*Male spear size doesn't include peg length.

T-Female



SPT31	15.9 Ø	80
SPT9	16 Ø	80
SPT33	19 Ø	80
* Size: 150x38		

T-Male



SPT36	16Ø x1.2 15.9Ø x1.2	80
SPT38	19Ø x1.2	80
SPT37	19Sqx 1.2	80

* Size: 127x38

*Male spear size doesn't include peg length.

T-Male



SPT13	16Ø x1.2	220
SPT7	19Ø x1.2	220

* Size: 95x38

*Male spear size doesn't include peg length.

*All Measurements Are In mm

*All Measurements Are In mm

Picket Tops Aluminium



PITSTONLP

65x16x1.2mm

140x65mm

60



PITSTONLFC
PICTSONLFD

65x16x0.9mm
75x16x0.9mm

140x65mm
150x75mm

60
60



JNPIT6516

65x16x0.9mm

40x65mm

200



PITSOV

65x16x0.9mm

115x65mm

60

Victorian Post Capitals



PTVPC090

90x90mm

230mm High

1

PTVPC100

100x100mm

230mm High

1

PTVPC125

125x125mm

290mm High

1

PTVPC SPEARB39F
Spear Top Only

16.3x19mm Round Male

-

1

* Suits Square Post

Ball Tops Male



PT50M

50x50mm

85mm High*

20

PT65M

65x65mm

100mm High*

25

PT75M

75x75mm

110mm High*

16

PT100M

100x100mm

140mm High*

1

*Measurement from top of post to the top of the base.

FENCE BRACKET ALUMINIUM

Powder Coated



FB38HB

Horizontal 2 Fixing Satin Black

2

38x25mm

200



FB38H-SB

Horizontal 2 Fixing Sahara Black

2

38x25mm

120



FB38HB-4PK

4 Pack 2 Fixing with Fixing Satin Black
4x FB38HB (Satin Black)
8x Tek screw 12-14-20 (Satin Black)

2

38x25mm

50



FB38VB

Vertical 2 Fixing Satin Black

2

38x25mm

250



FB38PB

Plain Satin Black

2

38x25mm

200



FB40PB

Plain Satin Black

2

40x40mm

150

FB40PB-4PK

4 Pack FB40P Fixing Included

2

40x40mm

50

FB40P-SB

Plain Sahara Black

2

40x40mm

80

FB50P-D-BLK

Plain Satin Black

2

50x50mm

240



SCB5050B

Plain Satin Black

2

50x50mm

95



FB5025PSLB

Single Lug Plain Satin Black

2

50x25mm

150



FB2550PDL-BLK

Double Lug Satin Black

2

25x50mm

150



FB40PDLB

Double Lug Satin Black

4

40x40mm

125

ALUMINIUM FENCE BRACKET

Horizontal Mill Finish



CODE	DESCRIPTION	FIXING HOLE	RAIL	CTN
FB38H	Single Lug	2	38x25mm	120
FB38H-E (Long Tag)	Single Lug	2	38x25mm	200

Vertical Mill Finish



CODE	DESCRIPTION	FIXING HOLES	RAIL	CTN
FB38V	Single Lug	2	38x25mm	250

Plain Profile Mill Finish



CODE	DESCRIPTION	FIXING HOLES	RAIL	CTN
FB38P	Single Lug Mill Finish Depth 30mm	2	38x25mm	200



FB40P	Single Lug Mill Finish Depth 27mm	2	40x40mm	150
-------	--------------------------------------	---	---------	-----



SCB5050	Single Lug Mill Finish Depth 50mm Width 71mm	2	50x50mm	90
---------	---	---	---------	----



FB50P-D	Single Lug Mill Finish Depth 30mm	2	50x50mm	240
---------	--------------------------------------	---	---------	-----



FB5025PSL	Single Lug Mill Finish	2	50x25mm	150
-----------	------------------------	---	---------	-----



FB40x8P	Single Lug Mill Finish	1	40x8mm	150
---------	------------------------	---	--------	-----

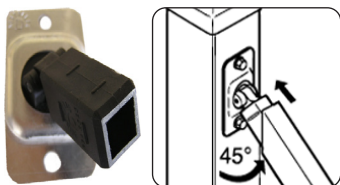
FENCE BRACKET

Horizontal Mill Finish



CODE	DESCRIPTION	FIXING HOLE	RAIL	CTN
FB25H	Single Lug	1	25x25mm	180
FB30H	Single Lug	1	30x30mm	150

Adjustable Bracket



CODE	DESCRIPTION	FIXING HOLES	RAIL	CTN
RBA2525	Aluminium Backing Plate Mill Finish	2	25x25mm 1.2-1.6mm	50
RBA2525B	Aluminium Backing Plate Satin Black	2	25x25mm 1.2-1.6mm	50



CODE	DESCRIPTION	STYLE	RAIL	CTN
AD3030	Adaptor Black	Plastic	30x30mm	100
AD3825	Adaptor Black	Plastic	38x25mm	100
AD4040	Adaptor Black	Plastic	40x40mm	100

Security Fencing



CODE	DESCRIPTION	CTN
SF40L-BLACK	Security Fencing Bracket Steel Satin Black Multi Directional 40x40mm Double Lug.130x75mm Suits 75mm Post	60
AS-SPEARTOP18	Aluminium Spear Tops 1800mm. Long 25x25x1.6mm Mill Finish	1
AS-SPEARTOP21	Aluminium Spear Tops 2100mm 25x25x1.6mm Mill Finish	1
AS-PUNBOX1S	Punched Box Single Sided 40x40x2mm, Radius Corners, Mill Finish Length 2400mm, 125mm Centers	1
AS-PUNBOX2S	Punched Box, Double Sided 40x40x2mm Radius Corners, Mill Finish Length 2400mm, 125mm Centers	1
AS-PUNBOX1S-6500	Punched Box Single Sided 40x40x2mm Radius Corners, Mill Finish Length 6500mm, 125mm Centers	1



Items Sold In Lengths
* Freight Surcharge May Apply.

Available in Galvabond Steel

ALUMINIUM FENCE BRACKETS

Plain Profile Mill Finish



FB2538PDL

Double Lug Mill Finish

2

25x38mm

90



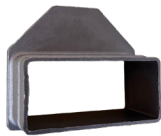
FB2550PDL

Double Lug Mill Finish

2

25x50mm

150



AS-FB7030P

Single Lug
Depth 35mm

Nil

70x30mm

100



FB40PDL

Double Lug Mill Finish

4

40x40mm

60



FB50PDL

Double Lug Depth 40mm
Mill Finish

4

50x50mm

25



FB50PDL-D

Double Lug Depth 30mm
Mill Finish

4

50x50mm

40

Horizontal Mill Finish



FB25HDL

Double Lug Aluminium

2

25x25mm

150

FB30HDL

Double Lug Aluminium

2

30x30mm

130

Plain Profile (Internal Fitting)



FB2538BL

Single Lug
Plastic Black

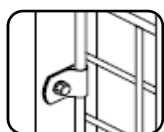
2

38x25x1.6mm

100

BRACKETS STEEL

U Clips



	CODE	DESCRIPTION	RAIL/SIZE	CARTON
	UC8/10	Rail Clips Galvabond	25x29mm	1000
	DFB3825-2D	Double lug 2 Holes Diagonal	38x25mm	200
	DFB3825-4	Double lug 4 Holes	38x25mm	200
	DFB4040-2D	Double lug 2 Holes Diagonal	40x40mm	200
	DFB4040-4	Double lug 4 Holes	40x40mm	200
	DFB4040-4-BLACK	Double lug 4 Holes Satin Black	40x40mm	200
	RFB3825-2	Single lug 2 holes	38x25mm	200
	TEB3825	End bracket galvabond fits internal (Side Fixing Required)	38x25x1.6mm	100
	127SECURITY	Attach to post and rail by pop rivet. Mill Finish Zinc	40x40mm	100
	J-BRACKET-GB	Timber rail joiners Galvabond	120x70x54mm	100
	PS5050GBHD	Post Saddle Galvabond	50x50mm	1 Only
	PS6565GBHD	Post Saddle Galvabond	65x65mm	1 Only
	Z-BRACKET	Timber rail holders Galvabond	75x53mm	96
	RJ3825	Rial joiners Galvabond (Internal fit)	38x25x1.6mm	50

Step Treads

CODE	DESCRIPTION	SIZE	CARTON
STGB	Galvabond Steel	200x75x55mm	40
STBB	Black Steel	200x75x55mm	40

Angle Bracket

AL3636

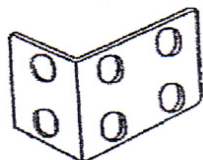
CODE	DESCRIPTION	SIZE	CARTON
AL3136	1 Holes Aluminium	31x36mm 7mm Hole	500



AL3636	2 Holes Aluminium	36x36mm 7mm Hole	500
--------	-------------------	---------------------	-----

SL3636

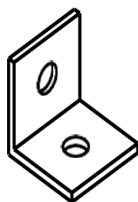
SL3636	2 Holes Galvanised	36x36mm 7mm Hole	500
--------	--------------------	---------------------	-----



GPB100	Galvabond	100x65mm	50
GPB150	Galvabond	150x65mm	40
GPB200	Galvabond	200x65mm	30
GPB250	Galvabond	250x65mm	25

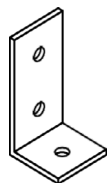


32PF12030	Purlin Bolts Zinc	M12x30mm	1 ctn of 300
-----------	-------------------	----------	-----------------



HAB4040405	M12 Hole Galvanised	40x40x40 5mm Thick	10
------------	---------------------	-----------------------	----

HAB5050505	M12 Hole Galvanised	50x50x50 5mm Thick	10
------------	---------------------	-----------------------	----



HAB4080405	M12 Hole Galvanised	40x80x40 5mm Thick	10
------------	---------------------	-----------------------	----

HAB50100505	M12 Hole Galvanised	50x100x50 5mm Thick	10
-------------	---------------------	------------------------	----

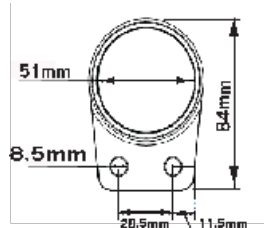


HAB8080405	M12 Hole Galvanised	80x80x40 5mm Thick	10
------------	---------------------	-----------------------	----

AB75100	4 hole Zinc	75x100mm	200
---------	-------------	----------	-----

HANDRAIL BRACKETS ALUMINIUM

Single Lug Mill Finish



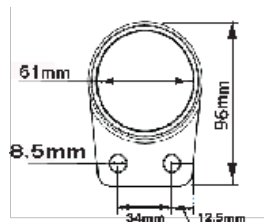
CB-CB1T50-2H

1 Tag
Aluminium

2

50mm

125



CB-CB1T60-2H

1 Tag
Aluminium

2

60mm

100



CB-CB1T50

1 Tag
Aluminium

1

50mm

80



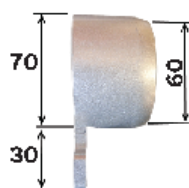
CB-CB1T60

1 Tag
Aluminium

1

60mm

65



CB-RTC

1 Tag 2 Part
Fits over extrusion

2

60mm

100

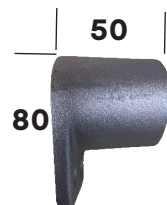
CB-RTC-TAG

Backing Tag Only

-

-

100



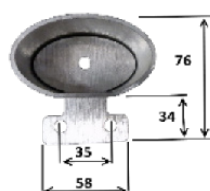
CB-OCB-C

1 Tag
Suits Capral Extrusion
Aluminium

2

70x40mm

70



CB-OCB-BP

1 Tag 2 Part
Suits Capral Extrusion
Oval Notched

2

70x41mm

130

CB-OCB-TAG

Backing Tag Only

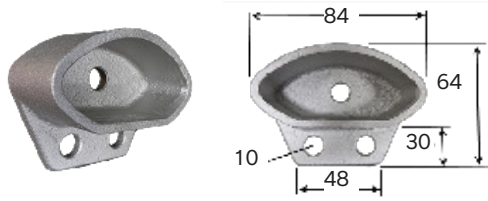
-

-

100

HANDRAIL BRACKETS ALUMINIUM

Single Lug Mill Finish



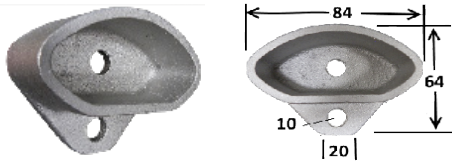
CB-OCB-A/2

Oval Bracket
Alspec Extrusion
1 Tag Aluminium

2

70 x 30mm

150



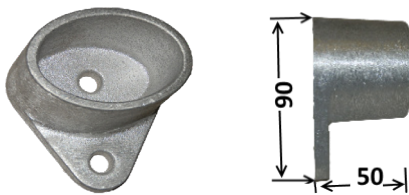
CB-OCB-A/1

Oval Bracket
Alspec Extrusion
1 Tag Aluminium

1

70 x 30mm

150



CB-OCB-S

Oval Bracket
Steelmark Extrusion
1 Tag Aluminium

1

68 x 44.5mm

65

Swagged Round Aluminium



SCB60ND

Round Swagged
Mill Finish

60ID x 50mm

100

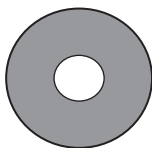


SCB60/110ND

Round Swagged
Mill Finish

60ID x 110mm

100



SCB60-DISC

60mm OD Disc
Mill Finish

60mm OD

100

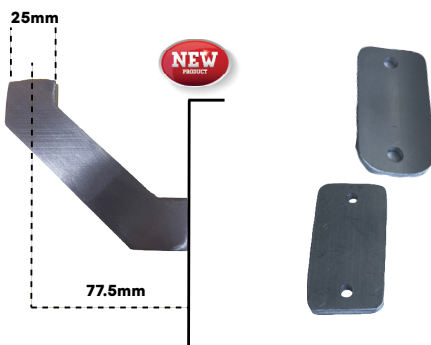
Aluminium Stems



501

Aluminium Stem 16mm Solid Tube
Length 95mm. 90mm Centers

20



RAILBRACKET

Aluminium stand off plate. Welded to Post.
Weldable Curved or Flat Top Saddle.
Centre 77.5mm Thickness 5mm

1 Only

RAIL-TOPCT

Aluminium Curved Handrail Saddle
Weldable 45 x 25mm

1 Only

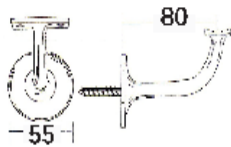
RAIL-TOPFT

Aluminium Flat Handrail Saddle
Weldable 45 x 25mm

1 Only

STAND-OFF BRACKETS

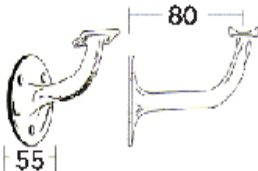
Stair Rail Brackets Mill Finish



443

Curved Top, Center Fixing,
Lag Screw Supplied
Application Internal & External
Zinc Alloy

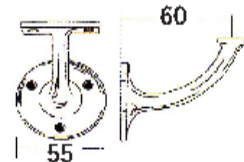
25



444

Curved Top, 3 Fixing Holes,
Application Internal & External
Zinc Alloy

25



440

Flat Top, 3 Fixing Holes
Application Internal & External
Zinc Alloy

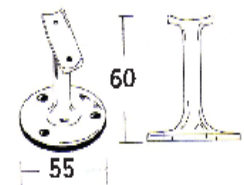
25



442

Flat Top, Center Fixing.
Lag Screw Supplied
Application Internal & External
Zinc Alloy

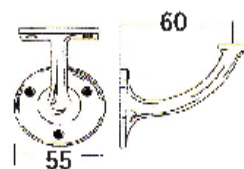
25



445

Curved Top, 3 Fixing Holes
Straight Bracket.
Application Internal & External
Zinc Alloy

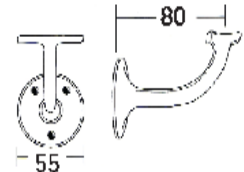
25



448

Flat Top, 3 Fixing Holes
Suits Stud Application
Application Internal & External
Zinc Alloy

25



449

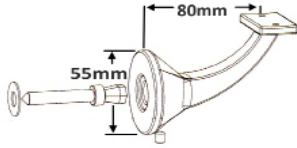
Curved Top, 3 Fixing Holes
Suits Stud Application
Application Internal & External
Zinc Alloy

25

Stair Rail Brackets Mill Finish



* Curved top



446CT

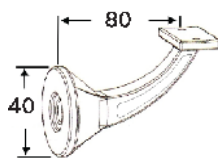
Curved Top, Center Fixing Holes
Includes Lag Screw
Application Internal & External
Zinc Alloy

25

446FT

Flat Top, Center Fixing Holes
Includes Lag Screw
Application Internal & External
Zinc Alloy

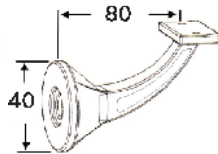
25



4461CT

Curved Top, Center Fixing Holes
Includes Lag Screw
Application Internal & External
Zinc Alloy

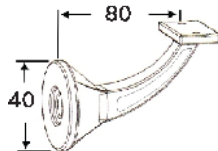
25



4461FT

Flat Top, Center Fixing Holes
Includes Lag Screw
Application Internal & External
Zinc Alloy

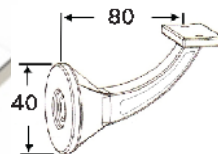
25



4462

Curved Top, Center Fixing Holes
Includes M10 Bolt
Application Internal & External
Zinc Alloy

25



4472

Flat Top, Center Fixing Holes
Includes M10 Bolt
Application Internal & External
Zinc Alloy

25



4462S

Spacer for 50mm Round Post
Application Internal & External
Zinc Alloy

25

STAND-OFF BRACKETS

Stainless Steel



SS443CTP

Curved Top, Center Fixing
Internal Application

10

SS443CT

Available in Satin or Polish
Backing Plate 60mm, Stem Centers 80mm
Stainless Steel 304



SS443FTP

Flat Top, Center Fixing.
Internal Application

10

SS443FT

Available in Satin or Polish
Backing Plate 60mm, Stem Centers 80mm
Stainless Steel 304



SS444FT

Flat Top, 3 Fixing Holes
Internal Application

10

SS444CT

Available in Satin
Backing Plate 60mm, Stem Centers 80mm
Stainless Steel 304



SS444FT316P

Flat Top, 3 Fixing Holes
External & Internal Application

10

SS444FT316S

Available in Satin or Polish
Backing Plate 60mm, Stem Centers 80mm
Stainless Steel 316



SS444CT316P

Curved Top, 3 Fixing Holes
External & Internal Application

10

SS444CT316S

Available in Satin or Polish
Backing Plate 60mm, Stem Centers 80mm
Stainless Steel 316



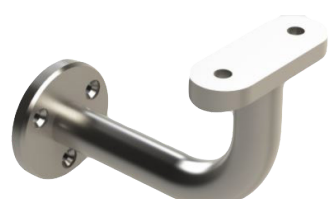
SS80FT

Flat Top, Concealed Fixing.
Internal Application

10

SS80CT

Available in Satin
Backing Cover 55mm, Stem Centers 80mm
Stainless Steel 304



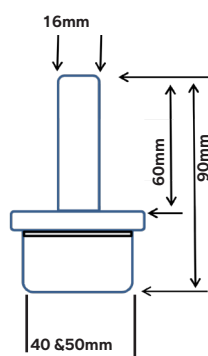
SS680CT-FT

Flat & Curved Top Conversion Inserts
3 Fixing Holes Commercial

10

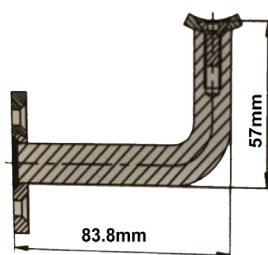
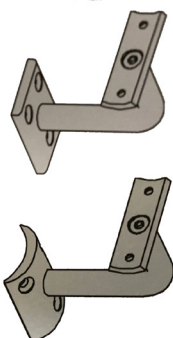
Internal Application
Backing Plate 40mm, Stem Centers 75mm
Polished Finish, 316 Stainless Steel

Aluminium



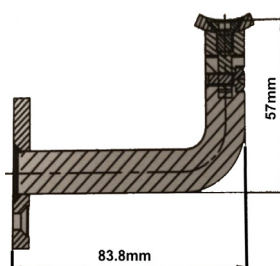
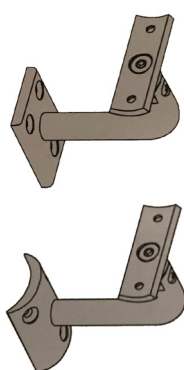
CODE	DESCRIPTION	CTN
MM-40-16	Connect Post To Level or Racked Balustrade 40mm Round, Wall 3.0mm Mill	10
MM-50-16	Connect Post To Level or Racked Balustrade 50mm Round, Wall 3.0mm Mill	10
MM-5050-16	Connect Post To Level or Racked Balustrade 50x50mm Square, Wall 3.0mm. Mill	10

Fixed Stand -Off



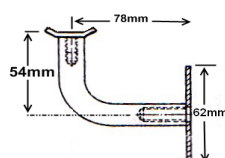
CODE	DESCRIPTION	CTN
MS-FIX-SQ	Square Post To Handrail Fixed Stem, Mill Finish	60
MS-FIX-RD	Round Post To Handrail Fixed Stem, Mill Finish	60

Adjustable Stand -Off



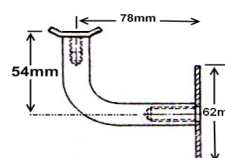
CODE	DESCRIPTION	CTN
MS-ADJ-SQ	Square Post Handrail Adjustable Stem. Mill Finish	60
MS-ADJ-RD	Round Post Handrail Adjustable Stem. Mill Finish	60

Matco Stainless Steel



CODE	DESCRIPTION	CTN
TC100SSCTP	Curved Top Concealed Fixing 304 Stainless Steel Satin	10
TC100SSFTP	Flat Top Concealed Fixing 304 Stainless Steel Satin	10

Matco Zinc Plated



CODE	DESCRIPTION	CTN
TC100CTP-ZP	Curved Top Concealed Fixing Zinc Plated Satin	10
TC100FTP-ZP	Flat Top Concealed Fixing Zinc Plated Satin	10