

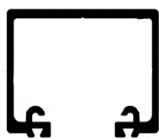


SLIDING DOOR SYSTEM

2018

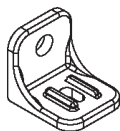
120 SERIES SINGLE RUN

MAX PANEL WEIGHT 120kg
MAX PANEL HEIGHT 3000mm
PANEL THICKNESS 19-48mm

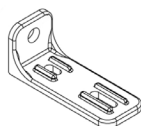


SIZE:
Width -41mm
Height -31mm

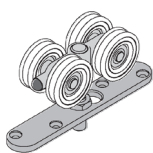
Track Profile 180
CLEAR ANODISED ALUMINIUM



Bracket:
B-1SS/250



Bracket:
B-5SS/120



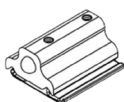
Hangers
57 Series
Plate Fitting
B-57SS/EN



Hangers
56 Series
Metal Panels
B-56SS/GN



Guide:
B-106E/94



Door Stop:
B-120DS



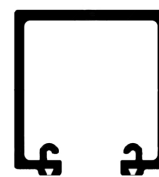
Floor Channel:
B-94PPA-60
Inner- Polypropylene
Outer- Aluminium

New

CODE	DESCRIPTION
B-120-30	Track 3000mm Anodised
B-120-60	Track 6000mm Anodised
B-1SS/250	Bracket Single Face
B-5SS/120	Bracket Double Face
B-57SS/EN	Hangers Timber
B-56SS/EN	Hangers Metal Doors Angle Frame
B-106E/94	Guide Timber & Metal Door
B-120DS	Door Stops
B-94PPA-60	Bottom Channel Aluminium & Polypropylene

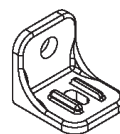
180 SERIES SINGLE RUN

MAX PANEL WEIGHT 180kg
MAX PANEL HEIGHT 3000mm
PANEL THICKNESS 35-48mm

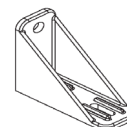


SIZE:
Width- 47mm
Height -45mm

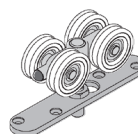
Track Profile 180
CLEAR ANODISED ALUMINIUM



Bracket:
B-1SS/250



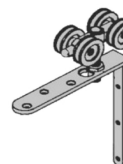
Bracket:
B-5SS/250



Hangers
57 Series
Plate Fitting
B-57SS/GN



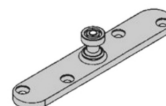
Hangers
56 Series
Metal Panels
B-56SS/GN



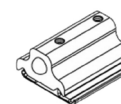
Hangers
52 Series
Angled
B-52SS/GN



Hangers
56 Series
Metal Panels
B-56SS/GLN



Guide:
B-106RB/94



Door Stop:
B-180DS



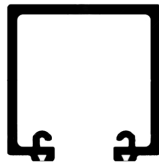
Floor Channel:
B-94PPA-60
Inner- Polypropylene
Outer- Aluminium

New

CODE	DESCRIPTION
B-180-30	Track 3000mm Anodised
B-180-60	Track 6000mm Anodised
B-1SS/250	Bracket Single Face
B-5SS/250	Bracket Double Face
B-57SS/GN	Hangers Timber
B-52SS/GN	Timber Doors-angle frame
B-56SS/GN	Hangers Metal Doors Angle Frame
B-56SS/GLN	Metal Doors-box frame
B-106RB/94	Guide Timber & Metal Door
B-180DS	Dopors Stop
B-94PPA-60	Bottom Channel Aluminium & Polypropylene

350 SERIES SINGLE RUN

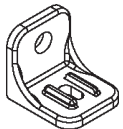
MAX PANEL WEIGHT 350kg
MAX PANEL HEIGHT 3300mm
PANEL THICKNESS 35-48mm



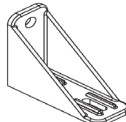
SIZE:
Width- 50mm
Height- 50mm

Track Profile 250

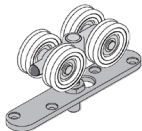
CLEAR ANODISED ALUMINIUM



Bracket:
B-1SS/250



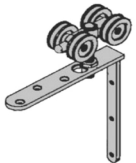
Bracket:
B-5SS/250



Hangers
57 Series
Plate Fitting
B-57SS/HN



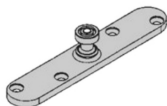
Hangers
56 Series
Metal Panels
B-57SS/HN



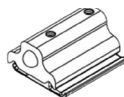
Hangers
52 Series
Angled
B-52SS/HN



Hangers
56 Series
Metal Panels
B-56SS/HLN



Guide:
B-106RB/94



Door Stop:
B-180DS



Floor Channel:
B-94PPA-60
Inner- Polypropylene
Outer- Aluminium

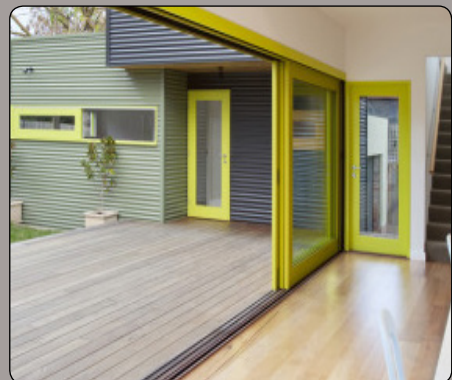
New

CODE	DESCRIPTION
B-350-40	Track 4000mm Anodised
B-350-60	Track 6000mm Anodised
B-1SS/250	Bracket Single Face
B-5SS/250	Bracket Double Face
B-57SS/HN	Hangers Timber
B-52SS/HN	Hangers Metal Doors Angle Frame
B-56SS/HN	Metal Doors -angle frame
B-56SS/HLN	Metal Doors- box frame
B-106RB/94	Guide Timber & Metal Door
B-180DS	Door Stop
B-94PPA-60	Bottom Channel Aluminium & Polypropylene

Brio

Brio's Single Run 120,180 and 350 system are designed for interior and exterior sliding shutters and doors up to 120, 180 and 350kg in weight for residential or light commercial application.

These system are suitable for single panels sliding to one side or two panels bi-partings a single run of track. Alternatively, panels can slide parallel to each other to suit almost any configuration.



NOTE:
FREIGHT SURCHARGES APPLY

SLIDING DOOR HANGER TRACK

120 SERIES Doors To 120kg



SIZE: 34x30
GAUGE: 1.0
LENGTH: 6100
GALVABOND

HANGER FITTING ARE ZINC PLATED



STEEL WHEELS;
DT120HS2



STEEL WHEELS;
DT120HS4

NYLON WHEELS:
DT120HN2

NYLON WHEELS:
DT120HN4



SIDE FIX BRACKET
DT120-1



OFFSET BRACKET
DT120-1A



OVERHEAD WELD-ON
BOLT-ON:
DT120-2



OVERHEAD DOUBLE
ANGLE BRACKET:
SUPPORT:
DT120-5A



TRACK STOP
WITH BUFFERS:
DT120-200TS



BOLT, NUT &
WASHER SET:
DT120BS
M8x20 C/SINK

CODE	DESCRIPTION
DT120-61	Track-Length 6100
DT120HS2	Hanger, 2 Wheel, Steel
DT120HN2	Hanger, 2 Wheel, Nylon
DT120HS4	Hanger, 4 Wheel, Steel
DT120HN4	Hanger, 4 Wheel, Nylon
DT120-1	Side Fix Bracket
DT120-1A	Offset Bracket-25mm
DT120-2	Overhead Bracket- Bolt On
DT120-5A	Angle Bracket-Double
DT120-200TS	Track Stop with Buffer
DT120BS	Bolt, Nut & Washer Set
DT120-200TP	Top Plate Assembly

200 SERIES Doors To 120kg



SIZE: 45x36
GAUGE: 1.2
LENGTH: 6100
GALVABOND

HANGER FITTING ARE ZINC PLATED



STEEL WHEELS;
DT200HS2



STEEL WHEELS;
DT200HS4

NYLON WHEELS:
DT200HN2

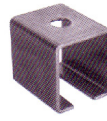
NYLON WHEELS:
DT200HN4



SIDE FIX BRACKET
DT200-1



OFFSET BRACKET
DT200-1B



OVERHEAD WELD ON
BOLT-ON:
DT200-2



OVERHEAD DOUBLE
BRACKET:
DT200-6B
(75mm GAP
BETWEEN TRACK)



TRACK STOP
WITH BUFFERS:
DT120-200TS



BOLT, NUT &
WASHER SET:
DT200BS
5/16"x 1 1/2" CUP

CODE	DESCRIPTION
DT200-61	Track-Length 6100
DT200HS2	Hanger, 2 Wheel, Steel
DT200HN2	Hanger, 2 Wheel, Nylon
DT200HS4	Hanger, 4 Wheel, Steel
DT200HN4	Hanger, 4 Wheel, Nylon
DT200-1	Side Fix Bracket
DT200-1B	Offset Bracket-35mm
DT200-2	Overhead Bracket- Bolt On
DT200-6B	Bracket-Double
DT120-200TS	Track Stop with Buffer
DT200BS	Bolt, Nut & Washer Set
DT120-200TP	Top Plate Assembly

DOOR WEIGHT							
120 Series	<50kg	50kg	60kg	70kg	80kg	100kg	120kg
200 Series	<80kg	80kg	85kg	100kg	130kg	160kg	200kg
450 Series	<170kg	170kg	220kg	260kg	320kg	400kg	450kg
800 Series	<210kg	210kg	330kg	330kg	420kg	600kg	800kg
Bracket Spacing	1200mm	1100mm	1000mm	900mm	800mm	700mm	600mm

450 SERIES

Doors To 450kg



SIZE: 66x55
GAUGE: 1.5
LENGTH: 6100
GALVABOND

HANGER FITTING ARE ZINC PLATED



STEEL WHEELS;
DT450HS2



STEEL WHEELS;
DT450HS4

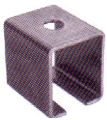
NYLON WHEELS:
DT450HN4



SIDE FIX BRACKET
DT450/1



ANGLE BRACKET
SUPPORT- SINGLE
DT450/SAB



OVERHEAD WELD ON
BOLT-ON:
DT450/2



ANGLE BRACKET
SUPPORT- DOUBLE
DT450/5A



TRACK STOP
WITH BUFFERS:
DT450/TS



BOLT, NUT &
WASHER SET:
DT450/BS
1/2"x 1 1/2" CUP

CODE	DESCRIPTION
DT450-61	Track-Length 6100
DT450HS2	Hanger, 2 Wheel, Steel
DT450HS4	Hanger, 4 Wheel, Steel
DT450HN4	Hanger, 4 Wheel, Nylon
DT450/1	Side Fix Bracket
DT450/SAB	Single Angle Bracket
DT450/2	Overhead Bracket- Bolt On
DT450/5A	Double Angle Bracket
DT450/TS	Track Stop with Buffer
DT450/BS	Bolt, Nut & Washer Set

800 SERIES

Doors To 800kg

*** FIRE DOOR CERTIFIED**



SIZE: 66x55
GAUGE: 4.0
LENGTH: 6100
GALVABOND

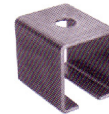
HANGER FITTING ARE ZINC PLATED



STEEL WHEELS;
DT800HS4



SIDE FIX BRACKET
DT800/1S



OVERHEAD WELD ON
BOLT-ON:
DT800/2S



TRACK STOP
WITH BUFFERS:
DT800/TS



BOLT, NUT &
WASHER SET:
DT800/BS
1/2"x 1 1/2" CUP

CODE	DESCRIPTION
DT800-61	Track-Length 6100
DT800HS4	Hanger, 4 Wheel, Steel
DT800/1S	Side Fix Bracket
DT800/2S	Overhead Bracket- Bolt On
DT800/TS	Track Stop with Buffer
DT800/BS	Bolt, Nut & Washer Set



THESE HANGER DOORS SYSTEMS ARE NOT DESIGNED FOR BI-FOLD APPLICATION

NOTE: FREIGHT SURCHARGES APPLY

DOOR WEIGHT							
120 Series	<50kg	50kg	60kg	70kg	80kg	100kg	120kg
200 Series	<80kg	80kg	85kg	100kg	130kg	160kg	200kg
450 Series	<170kg	170kg	220kg	260kg	320kg	400kg	450kg
800 Series	<210kg	210kg	330kg	330kg	420kg	600kg	800kg
Bracket Spacing	1200mm	1100mm	1000mm	900mm	800mm	700mm	600mm

ALL PRICING REFER TO PRICE BOOK PLEASE QUOTE CODES WHEN ORDERING